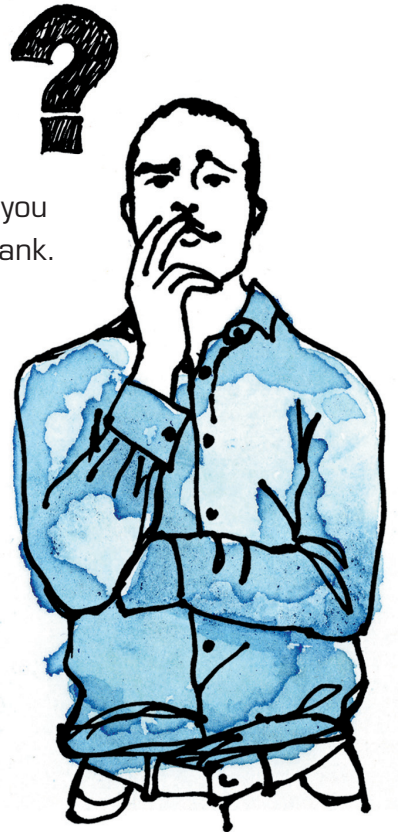
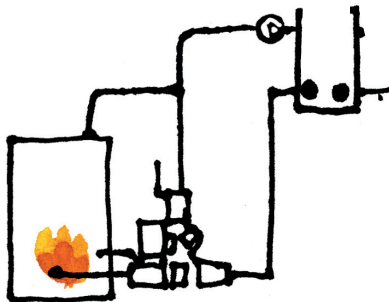


WHY LADDOMAT® ?

This is the answer to those who burn wood or pellets and wonder why you should complement your boiler with Laddomat and possibly a storage tank.



1. PROLONG THE SYSTEM'S LIFETIME



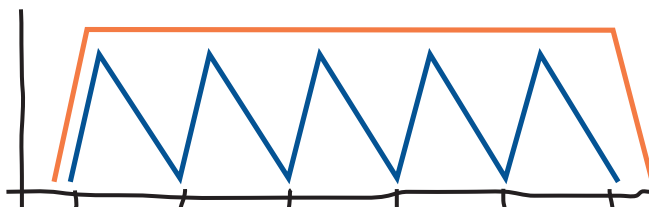
Laddomat in your system prolongs the lifetime of your boiler. Because Laddomat cools the boiler with pre-warmed return water, the corrosion in the bottom half of the boiler is reduced drastically. Many boiler manufacturers also provide a longer boiler guarantee when Laddomat is fitted to the heating system.

2. IMPROVED ECONOMY

A tankless system (direct system) must be started several times per day to maintain heat and that means that it consumes more wood or pellets. When you fit a storage tank and Laddomat to your system you can save up to 50 % of your costs.

3. HIGHER COMFORT

An accumulator tank acts as a buffer and intermediate store for water that is pumped around the system. The boiler heats the water in the tank, and the hot water is then supplied to the consumers. With accumulator tank there will be long pauses between the times the boiler is fired.

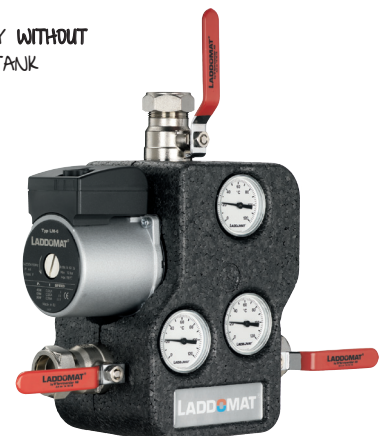


— E.G. FIRINGS/DAY WITH ACCUMULATOR TANK WITH LADDOMAT

— E.G. FIRINGS/DAY WITHOUT ACCUMULATOR TANK

4. ENVIRONMENTAL BENEFITS

With a storage tank and Laddomat you do not need to fire up the boiler as often as when the boiler is connected directly to the heating system. You exploit the energy that the fuel liberates significantly better, and create optimum conditions for environmentally sound heating.



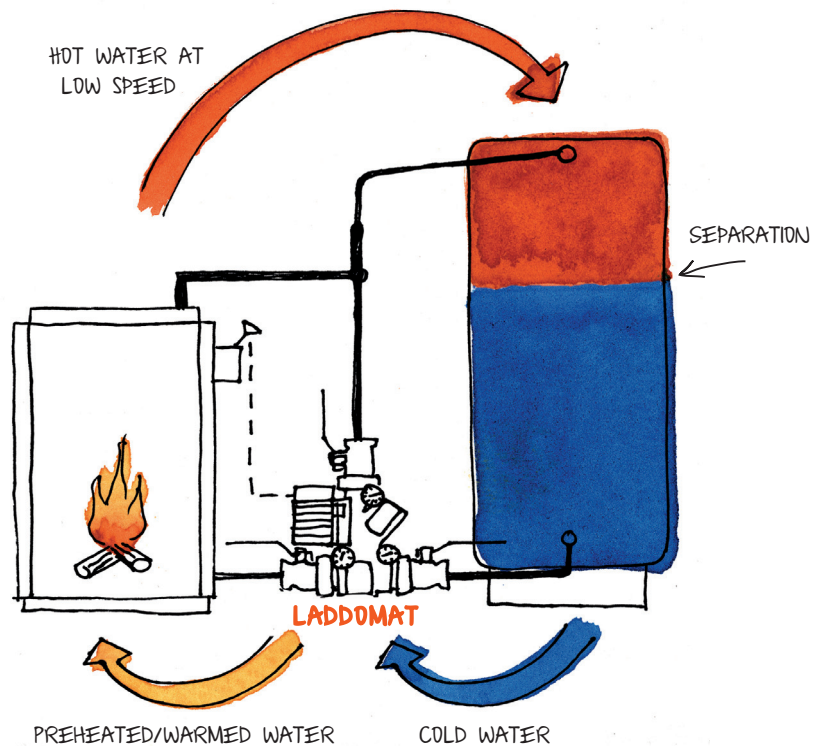
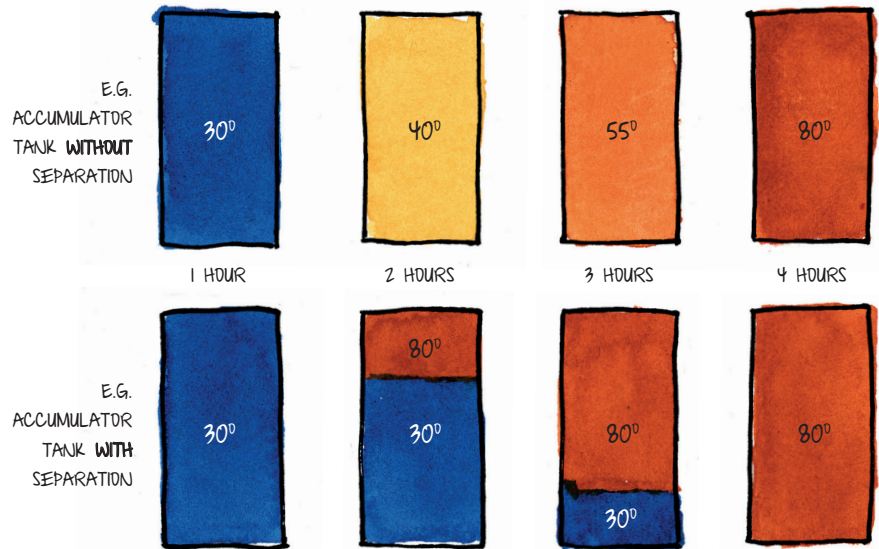
Laddomat 21-60

WHY ACCUMULATOR TANK?

The function of an accumulator tank is simple, and is built around the physical principle that hot water is lighter than cold water. Hot water from the boiler is pumped into the top of the tank, at the same time as cold water is retrieved from the bottom of the tank.

If this process is to function as intended, the boundary between hot and cold water must be sharp. If hot water and cold water are continually mixed, the water temperature will be lower. This means that capacity is reduced – in a worst case scenario, there will not be enough energy to heat the water for a single shower.

The secret behind perfect separation is to control the intake of the tank so the separation is not disturbed. The fitting that accomplishes this is called a charging unit, and the market leading charging unit is the **Laddomat**.



THIS IS HOW LADDOMAT OPERATES

When the boiler starts to fire up, Laddomat circulates the water internally in the boiler, so that it rapidly achieves its working temperature and can begin to heat the tank. Laddomat then pumps the hot water into the top of the accumulator tank slowly and under full control, so that separation remains optimum.

In addition, Laddomat cools the boiler with preheated return water – hot water from the top of the boiler is diluted with a little cold water from the bottom of the tank.

Retailer: